



## FAQ

### Using for the **first time**

- 1) As a first step, it is necessary to wire the devices
- 2) Next, Bluetooth devices must be configured, calibrated and set up
- 3) Then share this 'pre-configuration' with the end user (even without logging in)
- 4) Once the home is received, the end user can connect the devices to the Wi-Fi network.

### How to combine devices from the **S Series**

- 1) Bluetooth search is required to pair devices (check that Bluetooth and location are active)
- 2) Select the device to be configured.

### Guide to **templates** for each device:

[Click here](#) to view the guide

### Performing a **hard reset**

[Click here](#) to read the procedure for a factory reset of 4box S Series devices

### How to add a new **space (home)**

From the homepage, press 'Space', then press the new space icon.

### The different types of **shares and accesses**

There are two types of sharing and access, specifically:

- Family: full access to space settings
- Partial: partial and potentially timed access to devices in the space

4b P40 S



4b Uniko Pro S e Lite S



4b Relè Pro S e Lite S

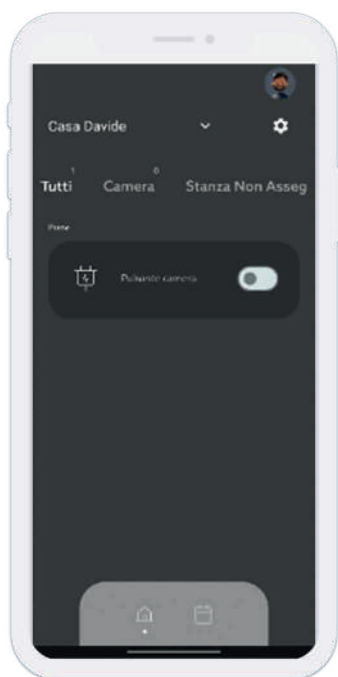




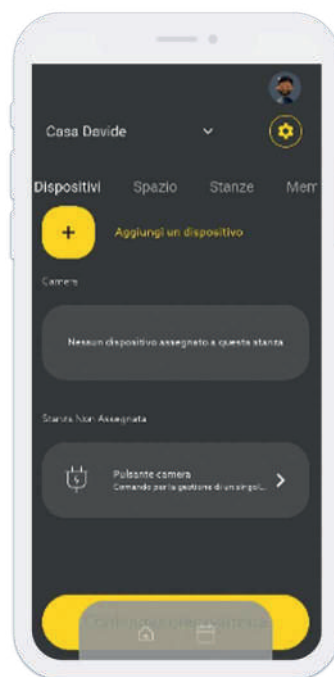
## FAQ

### How to update a device

To update your device, follow the steps indicated



From the home page, press the settings wheel



Select the device to be configured

4b P40 S



4b Uniko Pro S e Lite S



4b Relè Pro S e Lite S

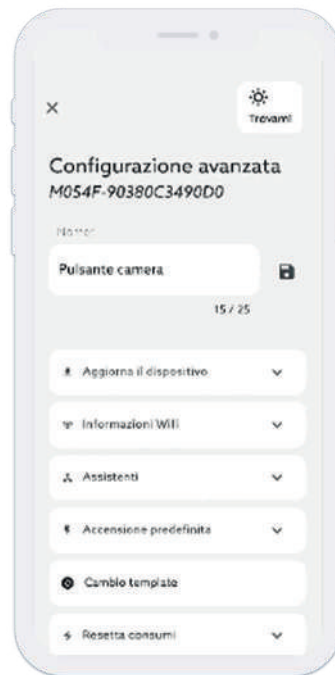




## FAQ



Press 'Advanced Configuration



Press "Update Device"

4b P40 S



4b Uniko Pro S e Lite S



4b Relè Pro S e Lite S





## FAQ

### Total control with a single socket

Monitor **energy consumption** in real time with the P40 S built-in energy meter and LED and you always know how much power is being used. The socket is also equipped with **internal temperature probe** which will intervene instantly in the event of danger by switching off the device.



**Micro Switch Button** with RGB status LED which indicates consumption from 0W to 3000W



From **0W** to **100W** the led turns **blue**



From **400W** to **1000W** the led turns **orange**



From **100W** to **200W** the led turns **green**



From **1000W** to **2500W** the led turns **red**



From **200W** to **400W** the led turns **yellow**



From **2500W** to **3000W** the led turns **purple**

4b P40 S

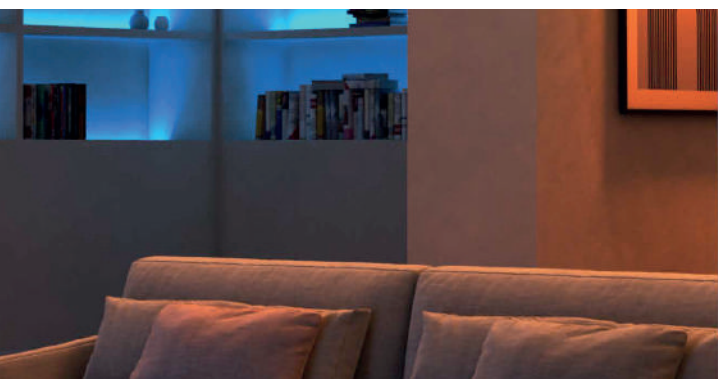


4b Uniko Pro S e Lite S



4b Relè Pro S e Lite S

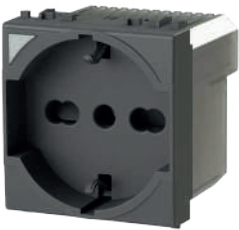




**4box.it**

### S Series product features

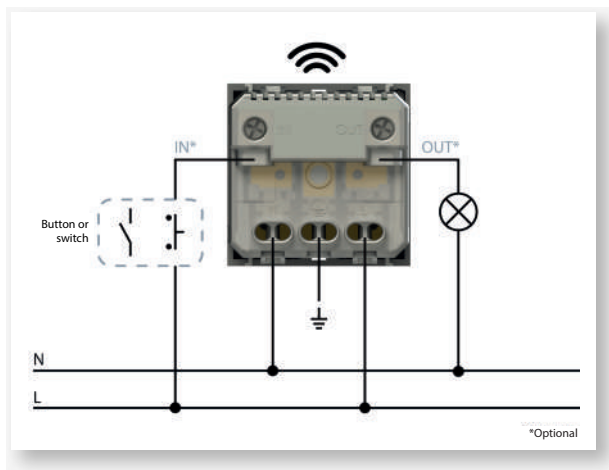
#### 4b P40 S



#### Function **controlled socket**

Smart electrical socket that can be controlled remotely or locally via an auxiliary input.

Connection diagram:



Note: The auxiliary output can be used to control other non-smart sockets.

## S Series product features

### 4b Uniko Lite S



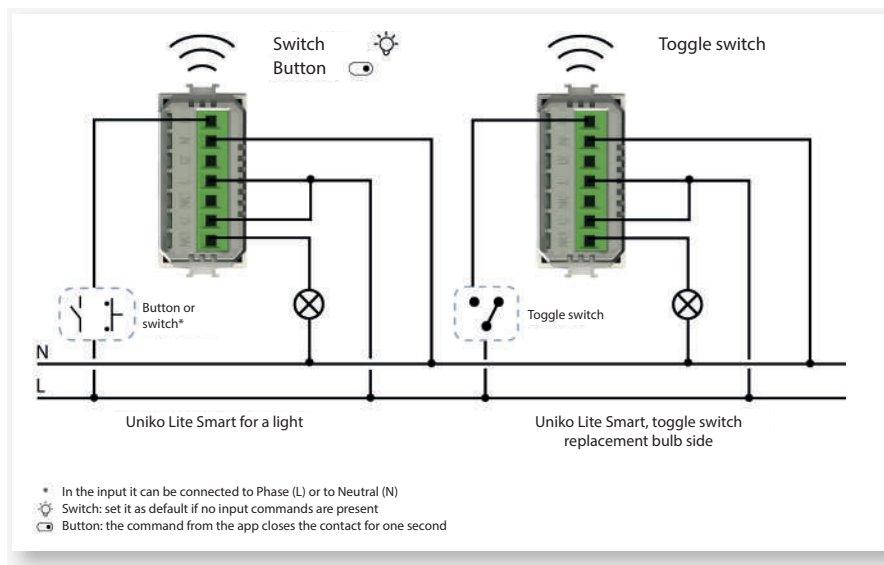
#### Function **single command**

Control for managing a single light point. It can be connected via terminals I1 and I2 to other auxiliary push-buttons/switches.

Command set as NO or NC push-button.

See the wiring diagram for more details.

#### Connection diagram:



Note: If a push-button is used, the pulse must be <math>< 1\text{ sec}</math>.



## FAQ

### S Series product features

## 4b Uniko Pro S



#### Function **single command**

Manage controls for a single light point.  
It can be connected via terminals I1 and I2 to other auxiliary push-buttons/switches.

Operate the Smart command as a toggle switch.

Manage the Smart control as an intermediate switch. (min 3w)

Manage the control as an NO push-button.  
See the wiring diagram for more details.

#### Function **dual command**

Control of two lighting points via special power outputs O1 and O2. It can be connected via terminals I1 and I2 to other auxiliary push-buttons/switches.

Double push-button management: both push-buttons will be configured as NO push-buttons.  
See the wiring diagram for more details.

#### Function **roller shutter motor**

Control for operating the motor of a classic roller shutter or electric blind.

Control for operating the motor of a sunshade/roller shutter, with the possibility of adjusting the inclination of the sunshade when the limit switch is reached.

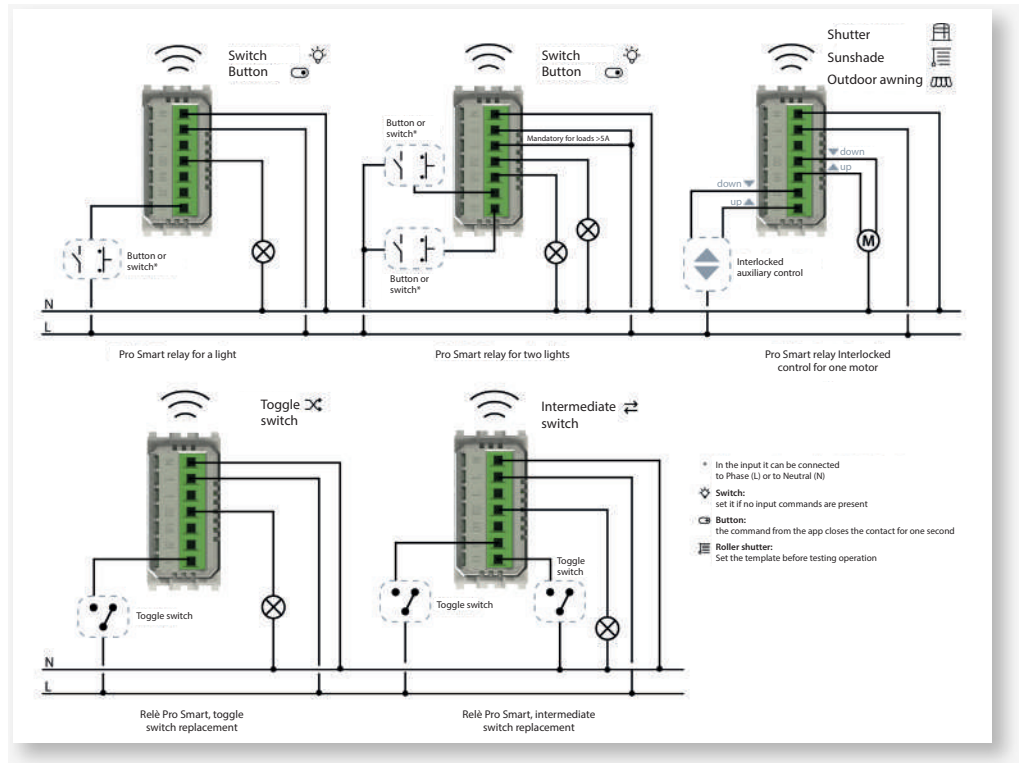
Control for operating the motor of an outdoor awning (reverse operation).  
See the wiring diagram for more details.

Note: Configure the shutter template before testing operation.



### S Series product features

#### Connection diagram:



Note: when set as a single command, the only output available is O2.  
If a push-button is used, the pulse must be <1 sec.